

## CONTACT US

540-825-8334 • sales@bandt-us.com • bandt-us.com

## SALES DIRECTORS



BRANDON WHEELER  
Central  
p. 918-319-7900  
e. bwheeler@bandt-us.com



MARK DELANCELOTTI  
West  
p. 540-229-2599  
e. mdelance@bandt-us.com



PERRY HYDE  
Midwest  
p. 540-229-1882  
e. phyde@bandt-us.com



DENNIS QUINN  
Mid-Atlantic, New England,  
Canada  
p. 540-219-4596  
e. dquinn@bandt-us.com



GARY MOUNTJOY  
Southeast  
p. 912-341-9482  
e. gmountjoy@bandt-us.com



*Built on Quality - Focused on Innovation*

# Meter Pit Extensions



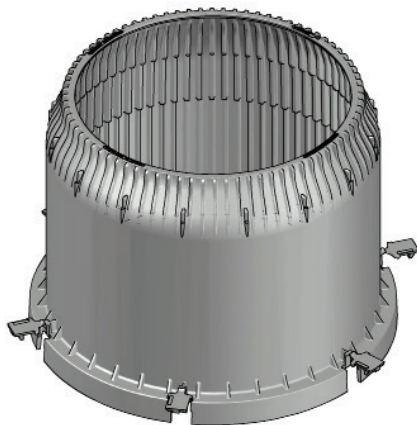
## Meter Access



[bandt-us.com/](http://bandt-us.com/)

# MATERIALS

Our Injection Molded Extension is designed with 100% virgin polypropylene (no recycled content) and is both lightweight and strong. Our Rotational Molded extensions are made of polyethylene copolymer and designed for durability.



## INJECTION MOLDED EXTENSIONS

COMPONENT	TOP DIAMETER	BOTTOM DIAMETER	HEIGHT
MMPE2406	20	24	6
MMPE2412			12
MMPE2418			18

# ASSEMBLY

B&T offers a diverse line of cast iron meter frames as well as both cast iron and plastic meter lids to create a meter access assembly. Our new Maverick (plastic) meter lids are specifically designed to allow for AMR/AMI transmission.

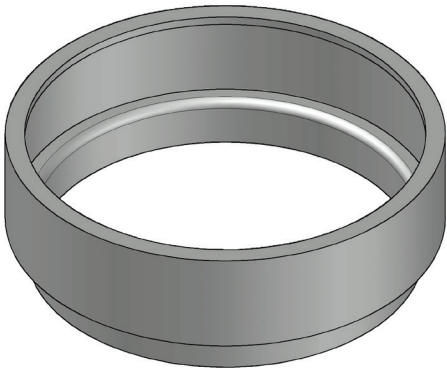
# INSTALLATION

Our injection molded extensions easily clamp on to an existing 24" meter pit. Our Rotational Molded extensions increase the height of a variety of diameter meter pits. We also offer a rotational molded angled extension with a 22-degree angle for installation on sloped ground.



## ROTATIONAL MOLDED ANGLED EXTENSION

COMPONENT	DIAMETER	HEIGHT
MPE2022	20	2-10



## ROTATIONAL MOLDED EXTENSIONS

COMPONENT	DIAMETER	HEIGHT
MPE1803	18	3
MPE1806		6
MPE1812		12
MPE2002	20	2
MPE2004		4
MPE2006		6
MPE2008		8
MPE2403	24	3
MPE2406		6
MPE3003	30	3
MPE3006		6
MPE3603	36	3
MPE3606		6

*\*Measurements in tables are in inches.*