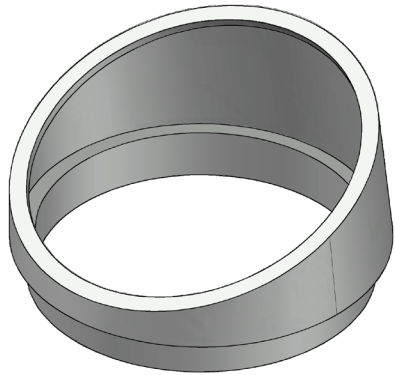


## ROTATIONAL MOLDED METER EXTENSIONS

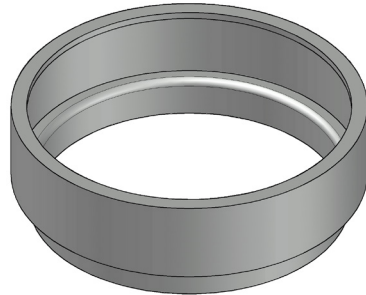


### ANGLED EXTENSION

COMPONENT	DIAMETER	HEIGHT
MPE2022	20	2-10

### EXTENSIONS

COMPONENT	DIAMETER	HEIGHT
MPE1803	18	3
MPE1806		6
MPE1812		12
MPE2002	20	2
MPE2004		4
MPE2006		6
MPE2008		8
MPE2403	24	3
MPE2406		6
MPE3003	30	3
MPE3006		6
MPE3603	36	3
MPE3606		6



# Meter Pits & Extensions



Contact Us Today!



bandt-us.com

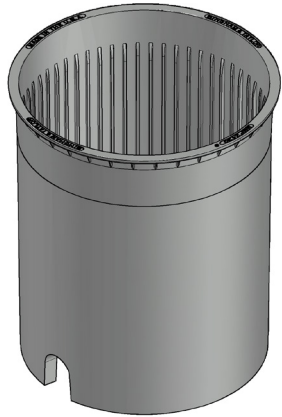
540-825-8334 • sales@bandt-us.com

Meter Access



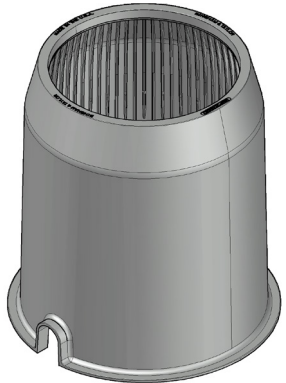
bandt-us.com

# INJECTION MOLDED METER PITS



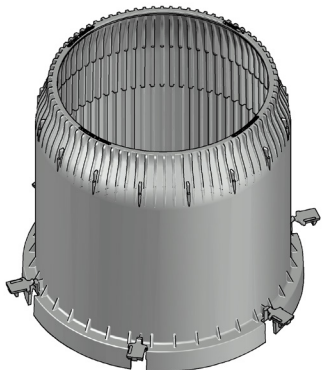
## STRAIGHT-WALLED PIT

COMPONENT	TOP DIAMETER	HEIGHT
MMP1824	18	24
MMP1830		30
MMP1836		36
MMP2030	20	30
MMP2036		36
MMP2430	24	30



## BULLET-NOSED PIT

COMPONENT	TOP DIAMETER	BOTTOM DIAMETER	HEIGHT
MMP182230	18	22	30
MMP202430	20	24	30



## BULLET-NOSED EXTENSIONS

COMPONENT	TOP DIAMETER	BOTTOM DIAMETER	HEIGHT
MMPE2406	20	24	6
MMPE2412			12
MMPE2418			18

Bullet-nosed extensions fit on the 24"x30" Meter Pit for total heights up to 48".

# MATERIALS

Our Injection Molded Meter Pits are designed with 100% virgin polypropylene (no recycled content) and are both lightweight and strong. Our Rotational Molded Meter Pits are made of polyethylene copolymer and designed for durability. Both pits have a rigid base that resists settling. Injection Molded Pits have a ribbed interior for strength and stiffness.

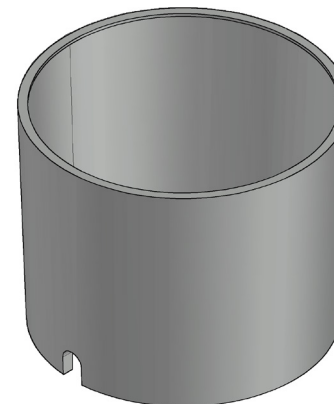
# DESIGN

All pits have a white interior to allow for better visibility inside the pit. Our Injection Molded Pits can withstand a 20,000 lb proof load and all pits resist cold, heat, and UV. There are two pipe entry areas (3" x 4") on all meter pits.

# ASSEMBLY

B&T offers a diverse line of cast iron meter frames as well as both cast iron and plastic meter lids to create a meter access assembly. Our new Maverick (plastic) meter lids are specifically designed to allow for AMR/AMI mounting options.

# ROTATIONAL MOLDED METER PITS



## METER PIT

COMPONENT	DIAMETER	HEIGHT
PMP3030	30	30
PMP3630	36	30
PMP3636	36	36

\*Measurements in tables are in inches.